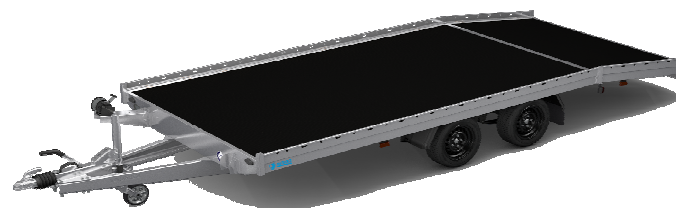


## Technical data

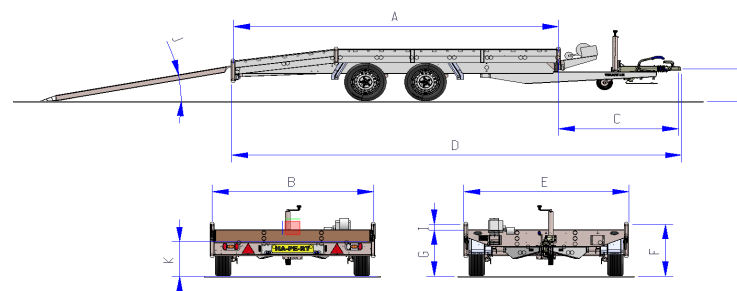
INDIGO HF-2



	HF2 2700kg. 405x201	HF2 2700kg. 455x201	HF2 3500kg. 455x201 parabolic	HF2 3500kg. 505x221 parabolic
<b>Dimensions / weights</b>				
Maximum Gross Weight	2700	2700	3500	3500
Empty weight	682	732	809	904
Loading capacity	2018	1968	2691	2596
Weight classes 2000 kg. empty weight:	- 4	-	-	-
Weight classes 3000 kg. empty weight:	+ 14	+ 14	-	-
Weight classes 3500 kg. empty weight:	-	+ 56	-	-
Version with aluminum floor	+ 14	+ 16	+ 16	+ 18
Interior length [A]	405	455	455	505
Interior width [B]	201	201	201	221
Length drawbar [C]	150	150	150	153
Total length [D]	561	611	611	664
Total width [E]	206	206	206	226
Total height [F]	70	70	70	70
Height of the loading floor [G]	62	62	62	62
Height of coupling [H]	44	44	44	44
Height of binding rail [I]	8	8	8	8
Drive-angle [J]	11°	11°	11°	11°
Height of the loading floor rear side [K]	47,5	47,5	47,5	47,5
Tyre size	195/50R13	195/50R13	195/50R13	195/50R13
Number of fixing points integrated in the side	14	14	14	14

Dimensions in cm, weights in kg.

All specifications are subject to change



Edition: 2022