

Transporters  
HF-2



**HAPERT INDIGO**  
TRANSPORTERS



**NEW!**

# INDIGO HF-2: THE ULTIMATE CAR TRANSPORTER

This new trailer has been specially developed for the transport of all kinds of cars. The Indigo HF-2 is therefore available in three sizes: 405 x 201 cm & 455 x 201 cm & 505 x 221 cm. and in different loading capacities. The car transporter is even available with parabolic suspension.

The new Indigo HF-2 is easy and practical to use, so that your cargo can be transported safely. Thanks to the beavertail with a ramp angle of only 11 degrees and the two long aluminum ramps (250 cm long), it's easy to drive your car safely on this transporter. In addition, the Indigo HF-2 is richly equipped with 195/50 R13 C tires and a winch with winch support at the front.

In short: the ultimate car transporter!

**BRING  
IT ON.**





## STANDARDS, OPTIONS, AND ACCESSORIES



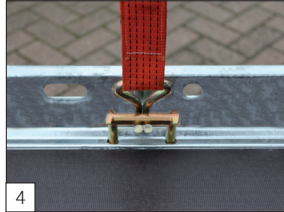
The Indigo HF-2 is available in 3 dimensions: 405x201, 455x201 and 505x221 cm.



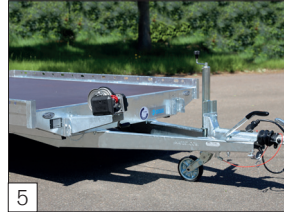
Maximum Gross Weight in 2000, 2700, 3000 and 3500 kg is possible.



**As standard:** a robust, adjustable winch with support.



**As standard:** with TÜV certified load securing system with 1000 daN (KG) for each fixing point.



**As standard:** bolted V-shaped drawbar 150 cm long.



**As standard:** tyres 195/50 R13 C.



**As standard:** beavertail at the trailer and a fixed Combi Protect Rail 8 cm high on the sides.



**As standard:** loading skid carrier underneath the floor and U-profil at the rear for placing the loading skids hinged.



**As standard:** aluminium loading skids in 250 cm long.



**Option:** floor of aluminium profiles instead of plywood floor.



**Option:** adjustable wheel chock model Combi Protect Rail with 2 black stops.



**Option:** two prop stands



**Option:** parabolic leaf spring axles incl. shock absorbers are possible for all Indigo HF models in 3500kg. (as standard for model 505x221 cm)



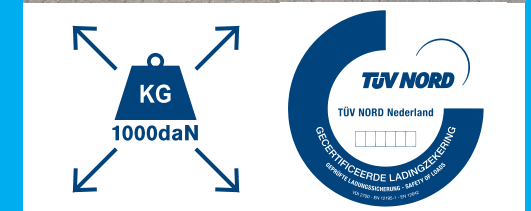
**Option:** Adjustable cable winch (6-way) instead of standard winch.



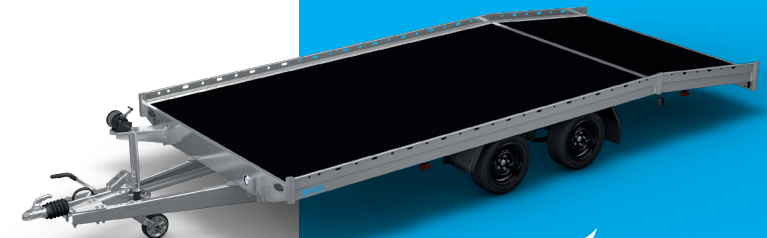
**Option:** Galvanized steel perforated floor without middle track, instead of multiplex floor.



**Option:** LED lighting.



All Hapert trailers have been provided with the TÜV certified load-securing system!



WWW.HAPERT.COM