

Transporters
LF-1, LF-2 & LF-3



HAPERT INDIGO
TRANSPORTERS

INDIGO LF: FOR THE TOUGHEST OF JOBS



This transporter is primarily intended for the transportation of excavators, cherry pickers, and other heavy-weight rolling machinery. In addition, the Indigo LF is eminently suitable for the transportation of stones, rubble, waste, etc. The continuous tail ramp with a height of 1500 mm, the plywood floor, and tyres 195/50 R13 are all part of the standard equipment. This trailer, with its robust frame and durable steel walls, is a real major-leaguer! Various options are available, including an aluminium profile floor, a wire-mesh rack, or dropsides. To ensure even more driving comfort and optimum road handling (particularly when carrying a full load) the options include parabolic suspension, including shock absorbers. In addition, the tyres 185/70 R13 C are eminently suitable for this purpose. These will turn your Indigo LF into a thoroughbred workhorse!

**BRING
IT ON.**



STANDARDS, OPTIONS, AND ACCESSORIES



Standard: reinforced frame.



Option: available as a single-axle version (Indigo LF-1) in 310 x 164 and 310 x 184 cm. (L x W).



Option: available as a 3-axle version (Indigo LF-3) in 410 x 164 and 410 x 184 cm (L x W).



Option: 2 steel galvanised loading skids with a length of 150 or 200 cm, hinged at the back.



Option: adjustable loading skids and removable corner posts.



Option: parabolic suspension including shock absorbers.



Option: tyres 185/70 R13 C with black rims (loading capacity 900 kg each).



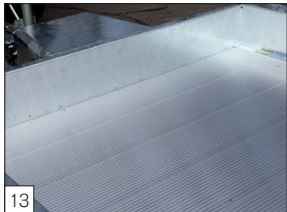
Option: parabolic suspension including tyres with black rims 195/50 R13 or 185/70 R13 C and aluminium profile floor mounted.



Standard: continuous tail ramp with a height of 1500 mm, including supports and high-quality suspension.



Option: support for excavator bucket in front.



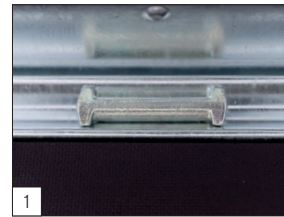
Option: aluminium profile floor instead of plywood floor.



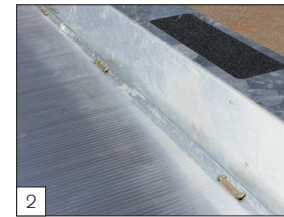
Option: aluminium front and side boards with a height of 30 cm.



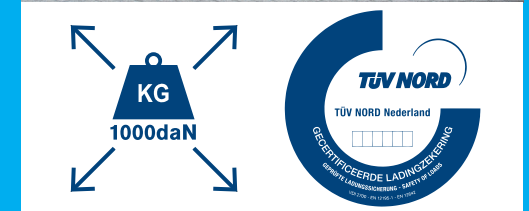
Option: LED-lights



Standard: binding brackets with a capacity of 1000 daN integrated in the floor.



Standard: provided with TÜV-certified binding brackets and Safety Steps on the sides.



All Hapert trailers have been provided with the TÜV certified load-securing system!



WWW.HAPERT.COM